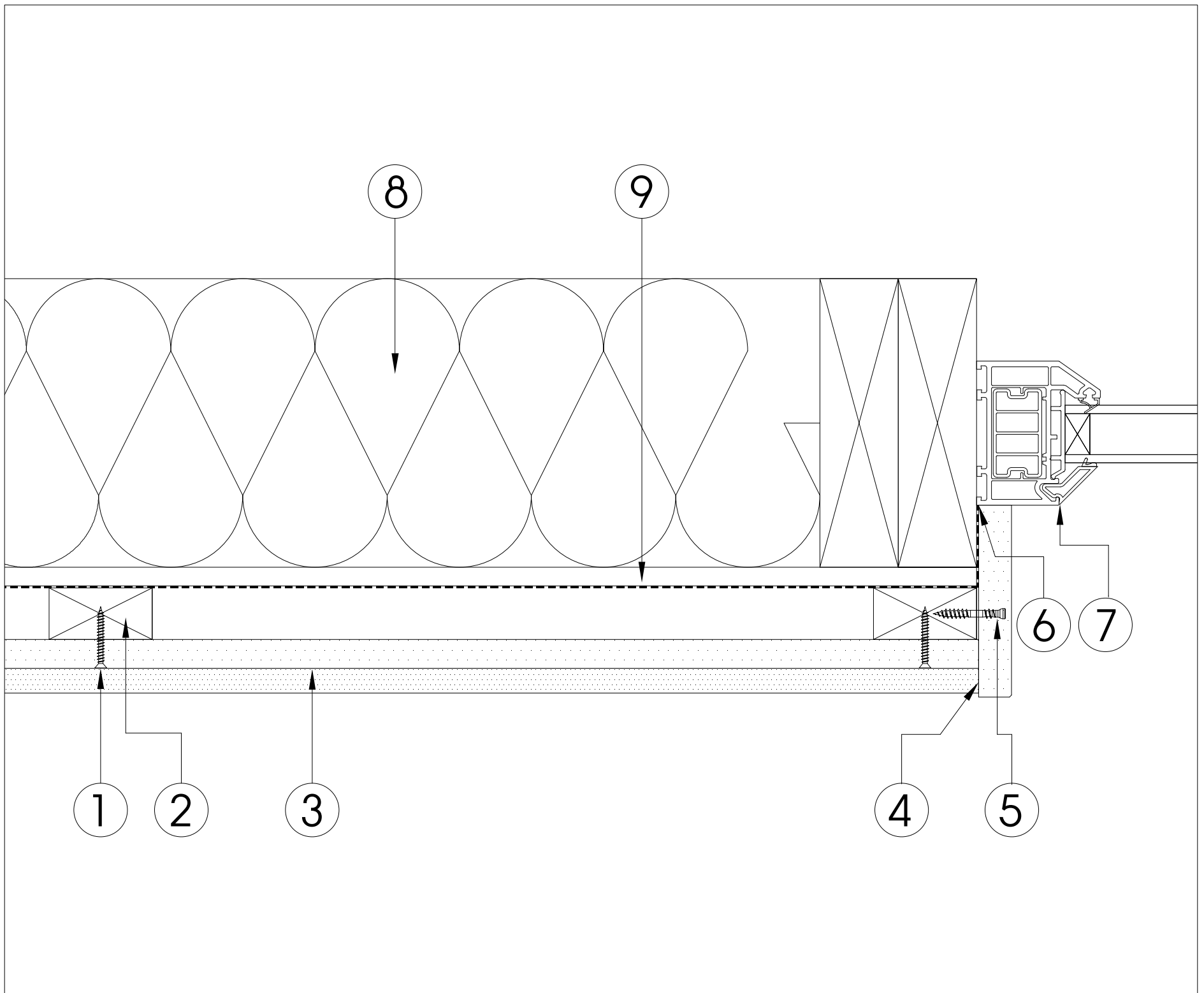


Window / Door jamb junction with Fascia boards - butt jointed

#323.22.01



- 1 - 30mm Cladding board fixing
- 2 - Battens at max 600mm centres
- 3 - Envello Board & Batten cladding board
- 4 - The back edge of the fascia will need to be finished with touch-up coating
- 5 - Durafix 35mm fixing

- 6 - Junction between back of Fascia boards and window to be sealed with silicone
- 7 - Example window/door jamb detail
- 8 - Example structural timber & sheathing or masonry wall
- 9 - Breather membrane