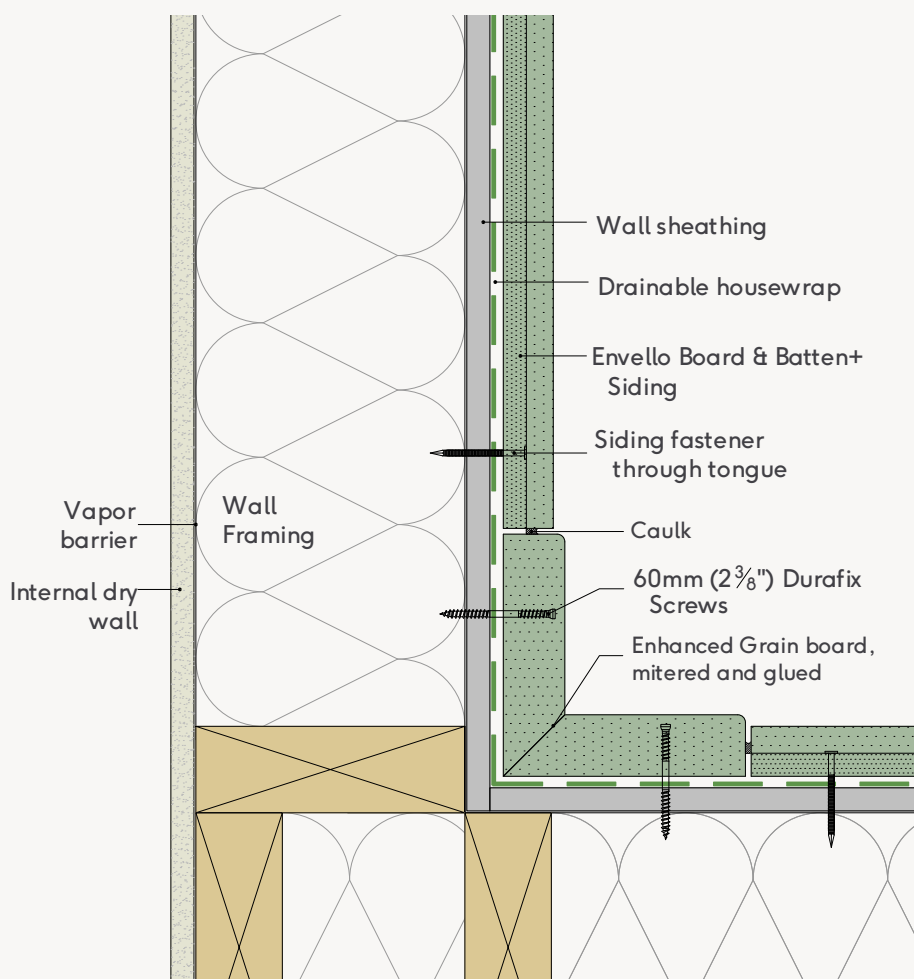


Internal corner mitered board

Siding Type:	Board & Batten+	Revision:	2
View Point:	Plan	Drawing Scale:	NTS
Board Orientation:	Horizontal	Date:	07/19/2024
Drawing Number:	MBUS - 229		

Note: Full installation guide should be read alongside the technical drawings.

Millboard has a policy of continual improvement to specification, details can change without notification.

**Millboard Inc.**

1330 Lagoon Ave., 4th Floor, Minneapolis MN 55408

T: +1 (651) 346-3068

E: inquiries@millboard.com

Registered in Delaware, No. 2403224

millboard.com